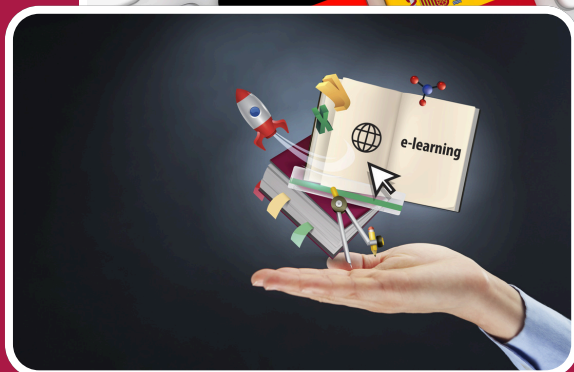




ONLINE COURSES

2025-26



COMHAIRLE NAN EILEAN SIAR



NEW
COLLEGE
LANARKSHIRE

National e-Learning Offer



DYW | Live 
Skills | Employability | Pathways

UHI | **NORTH, WEST AND HEBRIDES**
A TUATH, AN IAR IS INNSE GALL

Introduction

e-Sgoil is Scotland's national e-Learning service. Established in 2016 by Comhairle nan Eilean Siar, the service quickly grew to deliver live online teaching and learning to children and young people all across Scotland using a bank of teachers employed directly and a network of trusted Partners.

We are pleased to offer a range of full-year, certificated courses that learners anywhere in Scotland can access. These courses are taught via live, online lessons by either e-Sgoil's GTCS registered teachers, further education lecturers or other approved educators e.g. accredited training officers who deliver Foundation Apprenticeships.

The aim of the offer is to help schools create personal pathways for their young people, making courses available where they otherwise wouldn't be, either due to small numbers, lack of local subject-area expertise or both. It is intended that this offer can sit alongside the school's in-house option choices, to be considered along with other timetabled courses.

Tuesday and Thursday afternoons are the times that align with the greatest number of local authorities' timetable models. Even if the proposed timing does not suit your circumstances, we welcome expressions of interest and ask that you indicate a time that would work for you in order that we can consider other viable cohorts.

The Partners



COMHAIRLE NAN EILEAN SIAR

Comhairle nan Eilean Siar, Accredited Training and Skills

Comhairle nan Eilean Siar's Accredited Training and Skills Team has a strong track record of delivering employability programmes and apprenticeships for more than 30 years. In recent years, the team has embraced online and hybrid delivery to reduce geographical barriers to young people progressing in a career of their choice. The team is pleased to be able to extend the offer of online Foundation Apprenticeships to learners anywhere in Scotland.

New College Lanarkshire

Founded in 1865, New College Lanarkshire NCL) has grown to be one of Scotland's largest colleges, delivering exceptional learning opportunities and forging impactful collaborations with the public sector, business and the third sector. NCL is an innovative organisation with a strong track record of delivering courses to young people online.



**NEW
COLLEGE
LANARKSHIRE**



UHI North, West and Hebrides

UHI North, West and Hebrides is a long-standing partner of e-Sgoil and provides opportunities for young people to shape their futures in a changing world, equipping them with the skills they need for learning, life and work, now and in the future.

The offer

Click the images below for an enlarged view



	Specialist Supply	National Qualifications	Partnership Provision
	Chargeable service	Pay per seat	No cost to schools
Subject/ Courses available	<p>A specialist Supply service delivering online teaching to primary & secondary schools for medium/long-term periods where local, in-person supply options are not available.</p> <p>Full teaching costs would be billed to receiving schools.</p> <p><i>* other online language offers are available nationally from other providers. Contact the Confucius Institute for Scotlands Schools for details of Mandarin NQs and Edinburgh College for other modern languages.</i></p>	<ul style="list-style-type: none"> English AH* French N5* German N5* Italian N5* Spanish N5* Apps of Maths N5, H Maths AH Economics N5, H & AH Accounting N5, H & AH Modern Studies H & AH History AH Politics H Psychology N5 & H Philosophy N5, H & AH Sociology N5 & H Computing Science N5, H & AH Admin and IT N5, H & AH Business Management N5, H & AH RMPS N5, H & AH Physics AH ~ Chemistry AH ~ Biology AH ~ Human Biology H ~ Environmental Science N5 & H ~ Geography AH ~ <p>~ Theory only</p>	<ul style="list-style-type: none"> Digital Business Decision Making Introduction to Legal Studies NPA Introduction to Psychology/Criminology Maritime Studies NPA The Wonder of AI and The Cloud Travel & Tourism N5 Skills for Work Young Enterprise Company Programme <p>Foundation Apprenticeships</p> <ul style="list-style-type: none"> Business Skills Creative and Digital Media ^ Food and Drink Technologies Social Services: Children and Young People ^ Social Services: Healthcare ^ <p>Gaelic NQs</p> <ul style="list-style-type: none"> Gaelic N5/H/AH (learners) Gàidhlig N5/H/AH (fluent) <p>^ available for delivery in Gaelic Medium</p>



	Specialist Supply	National Qualifications	Partnership Provision
	Chargeable service	Pay per seat	No cost to schools
Timing	Timetabled to suit your school	Timetables will be based around Tuesday & Thursday afternoons. Other options may be available	Timetabled in harmonised 'sweetspots' to suit as many interested schools as possible in LA groups
Duration of delivery	e-Sgoil teacher will deliver subject/course for as long as required. No minimum period; maximum = full year	Full year	Full year
Class sizes/ cohort arrangements	Teaching delivered to classes already established at receiving school.	Classes aggregated across a number of schools. Class sizes will be a minimum of 14	Classes aggregated across a number of schools. Class sizes will be between a minimum of 12 and a maximum of 30.
Technology/ delivery method	Lessons typically delivered to one large screen in classroom, with group speaker/microphone. Camera on. Platform to suit receiving school e.g. MS Teams in Glow, MS Teams on local tenancy, Google Classroom	Lessons likely to be delivered to learners joining individually from own device. MS Teams in Glow. Learner cameras and mics on wherever possible	Lessons likely to be delivered to learners joining individually from own device. MS Teams in Glow. Learner cameras and mics on wherever possible



	Specialist Supply	National Qualifications	Partnership Provision
	Chargeable service	Pay per seat	No cost to schools
Costs	Receiving school pays cost of employing teacher	Schools pay £1,200 per pupil for full courses and £1000 for theory only delivery	Free to schools (funding via delivery partner)
Teaching delivered by	e-Sgoil teacher	e-Sgoil teacher. Where applicable the participating school will be responsible for delivering the practical element of the course.	Delivery Partner lecturer/tutor or e-Sgoil teacher
Presenting Centre	Receiving school	Participating school	FE Partner
Exam Arrangements (if required)	Candidates sit exams at their own school	Candidates sit exams at their own school	Candidates sit exams (if required) at their own school (acting as a 'sitting-at' centre).
Next steps / how to register	Complete this enquiry form	Complete this Expression of Interest Form for National Qualifications Courses (Glow form)	Complete this Expression of Interest Form for Partner Provision (Glow form)

Click below to access the forms for each offer

**Specialist Supply
Enquiry Form**

**National Qualifications
Expression of Interest form**

**Partnership Provision
Expression of Interest form**

Click here if you are having issues registering



Next Steps

	Timescale
Expressions of Interest (both teachers on behalf of learners and learners themselves)	February - August
Information sessions for schools and local authority staff Click here to join	Every Monday from 24th February 15:45-16:30
Information sessions for learners and supporting teachers x 3	March, April (dates tbc, 4-5pm)
Offer considered by learners/schools alongside Options Choice forms	February - April
Confirmation of learners enrolling	April-August
Provisional cohort viability established	End June
Enrolment with Delivery Partner, if required	June-August
Viability of courses confirmed (cohorts can be topped up after this date)	22nd August
Intro/onboarding session with learners	Mid-August
Start Courses	Late August

FAQs



How will the courses be timetabled?

Tuesday and Thursday afternoons are the times that align with the greatest number of local authorities' timetable models. Even if the proposed timing does not suit your circumstances, we welcome expressions of interest and ask that you indicate a time that would work for you in order that we can consider other viable cohorts.

How big will the classes be?

There will be different minimum class sizes depending on the viability constraints for each course. Maximum class sizes will be determined to ensure that the required level of interactivity and access to the teacher can be achieved. It is important that a good quality learning experience is created for all participants. No classes will have more than 30 learners.

What are the course fees?

Costs to schools vary from programme to programme – please see the Costs section of the table on page 4.

All coordination, advertising and IT support for delivery of live lessons via MS Teams in Glow is provided by e-Sgoil as part of the Scottish Government funded National e-Learning Offer.

Are course fees refundable if a learner withdraws?

We understand that learners' subject choices may change subject to exam results. The following policy will apply:

Withdrawal on or before 22nd August - 100% refund

Withdrawal after 22nd August - 100% refund if an alternative candidate can be identified

What equipment do learners require?

PC, laptop or other suitable device with a keyboard and camera.

A headset with microphone is recommended to ensure the best quality audio experience for everyone.

(For schools) What happens to the Insight Tariff Points?

For all courses, Insight tariff points will be accrued by the learner's school, even if it is not the presenting centre.

Role of the learner

[Click here](#) for pupil guide

Role of the learner's own school/supporting teacher

Schools are expected to support learners to fully engage with the online lessons and provide a point of contact to discuss progress and any difficulties that arise. They should ensure that learners have suitable IT equipment, internet connection and a space in the school to allow them to attend and participate in the lessons without undue distraction. It is for the school to determine what, if any, supervision the learner requires while participating.

